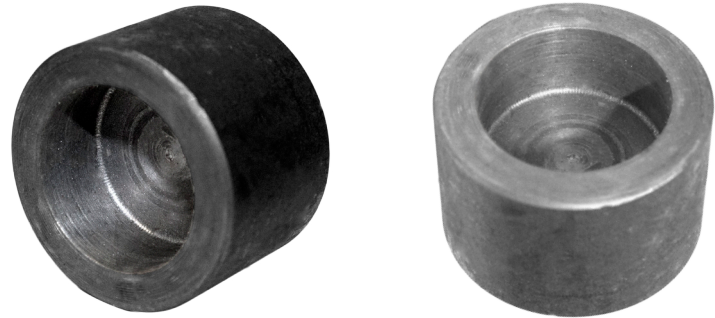
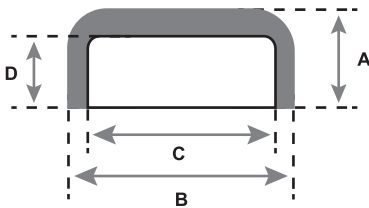




Republic Brass Sales, Inc.
619.229.8304
6566 Federal Blvd
Lemon Grove, CA 91945
www.republicbrasssales.com

CAP SOCKET WELD

Specification: ASME B16.11
Pressure Rating: 3000 / 6000 PSIG (WOG)



**AVAILABLE ALLOYS: (FERROUS) CARBON STEEL (A105) & STAINLESS STEEL (GRADES 304 / 316 / 321 / 347)
(NON-FERROUS) CUNI (90/10 & 70/30), NICU (MONEL), ALUMINUM (5086)**
**Additional materials available upon request.*

CLASS 3000												
NOMINAL PIPE SIZE	1/8"	1/4"	3/8"	1/2"	3/4"	1"	1 1/4"	1 1/2"	2"	2 1/2"	3"	4"
RBS P/N	CAXSW3-020	CAXSW3-040	CAXSW3-060	CAXSW3-100	CAXSW3-150	CAXSW3-200	CAXSW3-250	CAXSW3-300	CAXSW3-400	CAXSW3-450	CAXSW3-500	CAXSW3-600
A	0.688	0.750	0.750	0.875	1.000	1.063	1.188	1.250	1.500	1.563	1.813	2.063
B	0.750	0.875	1.063	1.250	1.500	1.813	2.250	2.500	3.000	3.625	4.313	5.500
C	0.420	0.555	0.690	0.855	1.065	1.330	1.675	1.915	2.406	2.906	3.535	4.545
D	0.375 (MIN.)	0.375 (MIN.)	0.375 (MIN.)	0.375 (MIN.)	0.500 (MIN.)	0.500 (MIN.)	0.500 (MIN.)	0.500 (MIN.)	0.625 (MIN.)	0.625 (MIN.)	0.625 (MIN.)	0.75 (MIN.)

CLASS 6000												
NOMINAL PIPE SIZE	1/8"	1/4"	3/8"	1/2"	3/4"	1"	1 1/4"	1 1/2"	2"	2 1/2"	3"	4"
RBS P/N	CAXSW6-020	CAXSW6-040	CAXSW6-060	CAXSW6-100	CAXSW6-150	CAXSW6-200	CAXSW6-250	CAXSW6-300	CAXSW6-400	CAXSW6-450	CAXSW6-500	CAXSW6-600
A	0.861	0.938	0.938	1.000	1.063	1.250	1.313	1.375	1.625	1.688	1.938	2.313
B	0.875	1.063	1.313	1.500	1.750	2.250	2.500	3.000	3.625	4.250	5.000	6.250
C	0.420	0.555	0.690	0.855	1.065	1.330	1.675	1.915	2.406	2.906	3.535	4.545
D	0.375 (MIN.)	0.375 (MIN.)	0.375 (MIN.)	0.375 (MIN.)	0.500 (MIN.)	0.500 (MIN.)	0.500 (MIN.)	0.500 (MIN.)	0.625 (MIN.)	0.625 (MIN.)	0.625 (MIN.)	0.75 (MIN.)

NOTES: Fittings may be ordered with reduced ends.

For P/N's replace X with the following codes:

Carbon Steel - **CS** Stainless Steel 321 - **321** Cuni 70/30 - **7**
Stainless Steel 304 - **304** Stainless Steel 347 - **347** Nicu (Monel) - **M**
Stainless Steel 316 - **316** Cuni 90/10 - **9** Aluminum Gr. 5086 - **A**

