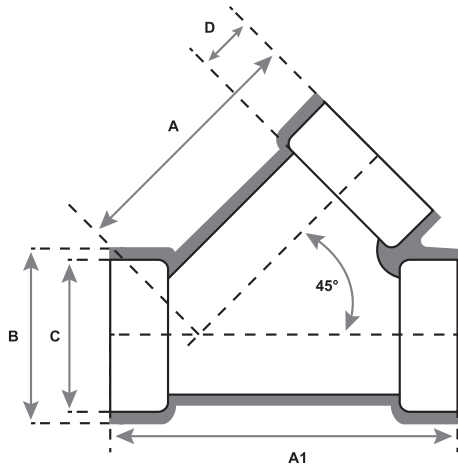




Republic Brass Sales, Inc.  
 619.229.8304  
 6566 Federal Blvd  
 Lemon Grove, CA 91945  
 www.republicbrasssales.com

# LATERAL SOCKET WELD

Specification: ASME B16.11  
 Pressure Rating: 3000 / 6000 PSIG (WOG)



AVAILABLE ALLOYS: (FERROUS) CARBON STEEL (A105) & STAINLESS STEEL (GRADES 304 / 316 / 321 / 347)  
 (NON-FERROUS) CUNI (90/10 & 70/30), NICU (MONEL), ALUMINUM (5086)

\*Additional materials available upon request.

CLASS 3000										
NOMINAL PIPE SIZE	1/8"	1/4"	3/8"	1/2"	3/4"	1"	1 1/4"	1 1/2"	2"	2 1/2"
RBS P/N	LXSW3-020	LXSW3-040	LXSW3-060	LXSW3-100	LXSW3-150	LXSW3-200	LXSW3-250	LXSW3-300	LXSW3-400	LXSW3-450
A	1.750	1.750	1.750	1.750	2.125	2.500	2.813	3.188	4.375	5.313
A1	2.500	2.500	2.500	2.500	3.000	3.500	4.000	4.500	6.000	7.500
B	1.500	1.500	1.500	1.500	1.750	2.000	2.438	2.750	3.313	4.000
C	0.426	0.560	0.693	0.859	1.071	1.335	1.682	1.922	2.410	2.910
D	0.375 (MIN.)	0.375 (MIN.)	0.375 (MIN.)	0.375 (MIN.)	0.5 (MIN.)	0.5 (MIN.)	0.5 (MIN.)	0.5 (MIN.)	0.625 (MIN.)	0.625 (MIN.)

CLASS 6000										
NOMINAL PIPE SIZE	1/8"	1/4"	3/8"	1/2"	3/4"	1"	1 1/4"	1 1/2"	2"	2 1/2"
RBS P/N	LXSW6-020	LXSW6-040	LXSW6-060	LXSW6-100	LXSW6-150	LXSW6-200	LXSW6-250	LXSW6-300	LXSW6-400	LXSW6-450
A	1.750	1.750	1.750	1.750	2.125	2.500	2.813	3.188	4.375	5.313
A1	2.500	2.500	2.500	2.500	3.000	3.500	4.000	4.500	6.000	7.500
B	1.500	1.500	1.500	1.500	1.750	2.000	2.438	2.750	3.313	4.000
C	0.426	0.560	0.693	0.859	1.071	1.335	1.682	1.922	2.410	2.910
D	0.375 (MIN.)	0.375 (MIN.)	0.375 (MIN.)	0.375 (MIN.)	0.5 (MIN.)	0.5 (MIN.)	0.5 (MIN.)	0.5 (MIN.)	0.625 (MIN.)	0.625 (MIN.)

NOTES: Fittings may be ordered with reduced ends.

For P/N's replace X with the following codes:

Carbon Steel - **CS**

Stainless Steel 304 - **304**

Stainless Steel 316 - **316**

Stainless Steel 321 - **321**

Stainless Steel 347 - **347**

Cuni 90/10 - **9**

Cuni 70/30 - **7**

Nicu (Monel) - **M**

Aluminum Gr. 5086 - **A**

