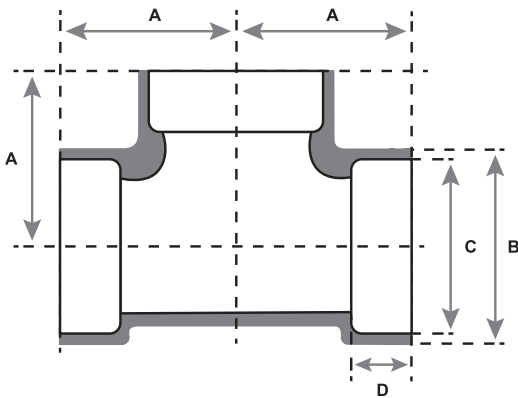




Republic Brass Sales, Inc.  
619.229.8304  
6566 Federal Blvd  
Lemon Grove, CA 91945  
www.republicbrasssales.com

# TEE SOCKET WELD

Specification: ASME B16.11  
Pressure Rating: 3000 / 6000 PSIG (WOG)



AVAILABLE ALLOYS: (FERROUS) CARBON STEEL (A105) & STAINLESS STEEL (GRADES 304 / 316 / 321 / 347)  
(NON-FERROUS) CUNI (90/10 & 70/30), NICU (MONEL), ALUMINUM (5086)

*\*Additional materials available upon request.*

CLASS 3000												
NOMINAL PIPE SIZE	1/8"	1/4"	3/8"	1/2"	3/4"	1"	1 1/4"	1 1/2"	2"	2 1/2"	3"	4"
RBS P/N	TXSW3-020	TXSW3-040	TXSW3-060	TXSW3-100	TXSW3-150	TXSW3-200	TXSW3-250	TXSW3-300	TXSW3-400	TXSW3-450	TXSW3-500	TXSW3-600
A	0.875	0.875	0.969	1.125	1.313	1.500	1.750	2.000	2.375	3.000	3.375	4.188
B	0.906	0.906	1.063	1.313	1.563	1.844	2.219	2.500	3.031	3.688	4.313	5.75
C	0.420	0.555	0.690	0.855	1.065	1.330	1.675	1.915	2.406	2.906	3.535	4.545
D	0.375 (MIN.)	0.375 (MIN.)	0.375 (MIN.)	0.375 (MIN.)	0.5 (MIN.)	0.5 (MIN.)	0.5 (MIN.)	0.5 (MIN.)	0.625 (MIN.)	0.625 (MIN.)	0.625 (MIN.)	0.75 (MIN.)

CLASS 6000												
NOMINAL PIPE SIZE	1/8"	1/4"	3/8"	1/2"	3/4"	1"	1 1/4"	1 1/2"	2"	2 1/2"	3"	4"
RBS P/N	TXSW6-020	TXSW6-040	TXSW6-060	TXSW6-100	TXSW6-150	TXSW6-200	TXSW6-250	TXSW6-300	TXSW6-400	TXSW6-450	TXSW6-500	TXSW6-600
A	0.750	0.969	1.125	1.313	1.500	1.750	2.000	2.375	2.500	3.250	3.750	4.500
B	0.906	1.063	1.313	1.563	1.844	2.219	2.500	3.031	3.375	4.000	4.750	6.000
C	0.420	0.555	0.690	0.855	1.065	1.330	1.675	1.915	2.406	2.906	3.535	4.545
D	0.375 (MIN.)	0.375 (MIN.)	0.375 (MIN.)	0.375 (MIN.)	0.5 (MIN.)	0.5 (MIN.)	0.5 (MIN.)	0.5 (MIN.)	0.625 (MIN.)	0.625 (MIN.)	0.625 (MIN.)	0.75 (MIN.)

NOTES: Fittings may be ordered with reduced ends.

For P/N's replace X with the following codes:

Carbon Steel - <b>CS</b>	Stainless Steel 321 - <b>321</b>	Cuni 70/30 - <b>7</b>
Stainless Steel 304 - <b>304</b>	Stainless Steel 347 - <b>347</b>	Nicu (Monel) - <b>M</b>
Stainless Steel 316 - <b>316</b>	Cuni 90/10 - <b>9</b>	Aluminum Gr. 5086 - <b>A</b>

