

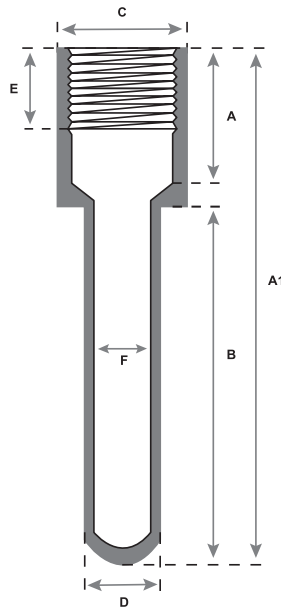


Republic Brass Sales, Inc.
 619.229.8304
 6566 Federal Blvd
 Lemon Grove, CA 91945
 www.republicbrasssales.com

THERMOWELL

Specification: MIL-T-24270

THERMOWELL SENSOR		
SENSOR TYPE	SYMBOL	SPECIFICATION
Mechanical	M	MIL-I-17244 or MIL-T-19646
Electrical	E	MIL-T-24388



AVAILABLE ALLOYS: (FERROUS) CARBON STEEL (A105) & STAINLESS STEEL (GRADES 304 / 316 / 321 / 347) (NON-FERROUS) CUNI (90/10 & 70/30), NICU (MONEL), AND BRONZE

INSERTION LENGTH	RBS P/N	A	A1	B	C	D	E	F	THREADS
2"	THERMOX-2	1.063	3.313	2	1.047 MIN - 1.049 MAX	0.625 +/- 0.005	0.438	0.379 (-0.0/+0.008)	.750-28UNS-2B
4"	THERMOX-4	1.063	5.313	4	1.047 MIN - 1.049 MAX	0.625 +/- 0.005	0.438	0.379 (-0.0/+0.008)	.750-28UNS-2B

NOTES: For P/N's replace X with the following codes:

Stainless Steel 304 - **304** Stainless Steel 347 - **347** Cuni 90/10 - **9**
 Stainless Steel 316 - **316** Carbon Steel - **CS** Cuni 70/30 - **7**
 Stainless Steel 321 - **321** Bronze - **B** Nicu (Monel) - **M**

Additional sizes and types available upon request.

Thermowells are designed to receive sensors of mechanical thermometers or electrical temperature sensors.

