



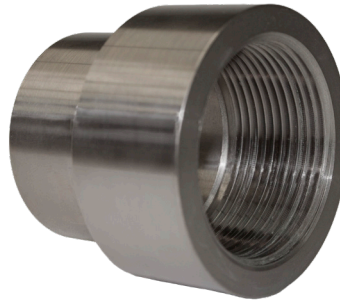
Republic Brass Sales, Inc.
619.229.8304
6566 Federal Blvd
Lemon Grove, CA 91945
www.republicbrasssales.com

FEMALE PIPE THREAD ADAPTER SOCKET WELD

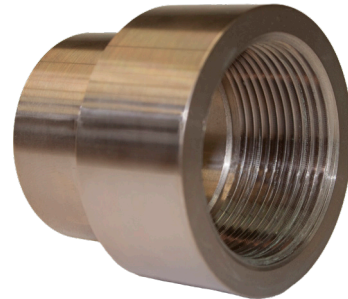
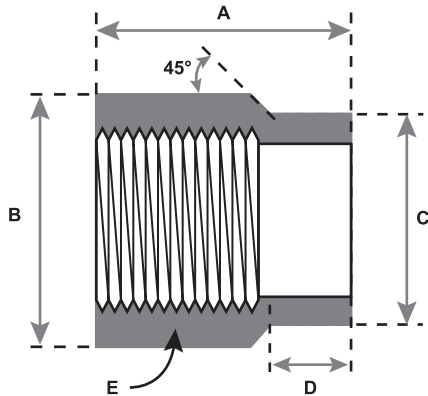
Specification: NAVSEA DWG 803-6397430
Pressure Rating: 400 PSIG (WOG)

Intended for use with Class 200 or 700
Copper Nickel Tube IAW MIL-T-16420

SERVICE RATING TABLE				
Nominal Pipe Size (INCHES)	Maximum Working Pressure (LB/IN ²)	Maximum Temperature (°F)	Maximum Working Pressure (LB/IN ²)	Maximum Temperature (°F)
1/4 through 6	200	425	400	150
Above 6	150	425	250	150



70/30 CUNI
(ALLOY C715/C964)



90/10 CUNI
(ALLOY C706/C962)

AVAILABLE ALLOYS: CUNI 90/10 & CUNI 70/30

NOMINAL PIPE SIZE	1/4"	3/8"	1/2"	3/4"	1"	1 1/4"	1 1/2"	2"
RBS P/N (90/10)	A9MSW040	A9MSW060	A9MSW100	A9MSW150	A9MSW200	A9MSW250	A9MSW300	A9MSW400
RBS P/N (70/30)	A7MSW040	A7MSW060	A7MSW100	A7MSW150	A7MSW200	A7MSW250	A7MSW300	A7MSW400
A	1.000	1.380	1.530	1.410	1.560	2.130	2.190	2.380
B	0.900 MIN. - 0.945 MAX.	1.051 MIN. - 1.096 MAX.	1.230 MIN. - 1.275 MAX.	1.458 MIN. - 1.503 MAX.	1.735 MIN. - 1.780 MAX.	2.084 MIN. - 2.129 MAX.	2.342 MIN. - 2.387 MAX.	2.863 MIN. - 2.908 MAX.
C	0.540 (+.000 / -.005)	0.675 (+.000 / -.005)	0.840 (+.000 / -.006)	1.050 (+.000 / -.006)	1.315 (+.000 / -.008)	1.660 (+.000 / -.008)	1.900 (+.000 / -.008)	2.375 (+.000 / -.010)
D	0.39 (+ 0.06 / -0.00)	0.44 (+ 0.06 / - 0.00)	0.5 (+ 0.06 / - 0.00)	0.53 (+ 0.06 / - 0.00)	0.56 (+ 0.06 / - 0.00)	0.63 (+ 0.06 / - 0.00)	0.75 (+ 0.06 / - 0.00)	0.78 (+ 0.06 / - 0.00)
E	1/4 X 18	3/8 X 18	1/2 X 14	3/4 X 14	1 X 11.5	1-1/4 X 11.5	1-1/2 X 11.5	2 X 11.5

NOTES: Fittings may be ordered with reduced ends and/or female threads

