



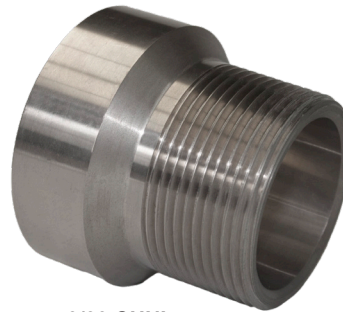
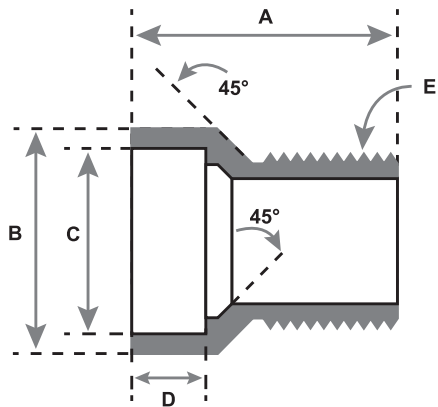
Republic Brass Sales, Inc.
 619.229.8304
 6566 Federal Blvd
 Lemon Grove, CA 91945
 www.republicbrasssales.com

MALE PIPE THREAD ADAPTER SOCKET WELD

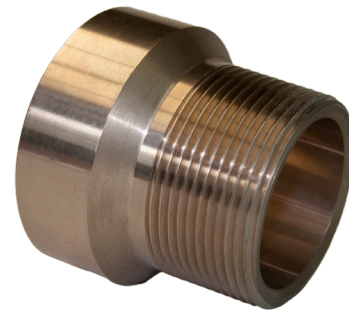
Specification: NAVSEA DWG 803-6397430
 Pressure Rating: 400 PSIG (WOG)

Intended for use with Class 200 or 700
 Copper Nickel Tube IAW MIL-T-16420

SERVICE RATING TABLE				
Nominal Pipe Size (INCHES)	Maximum Working Pressure (LB/IN ²)	Maximum Temperature (°F)	Maximum Working Pressure (LB/IN ²)	Maximum Temperature (°F)
1/4 through 6	200	425	400	150
Above 6	150	425	250	150



70/30 CUNI
 (ALLOY C715/C964)



90/10 CUNI
 (ALLOY C706/C962)

AVAILABLE ALLOYS: CUNI 90/10 & CUNI 70/30

NOMINAL PIPE SIZE	1/4"	3/8"	1/2"	3/4"	1"	1 1/4"	1 1/2"	2"
RBS P/N (90/10)	A9MPT040	A9MPT060	A9MPT100	A9MPT150	A9MPT200	A9MPT250	A9MPT300	A9MPT400
RBS P/N (70/30)	A7MPT040	A7MPT060	A7MPT100	A7MPT150	A7MPT200	A7MPT250	A7MPT300	A7MPT400
A	1.22 (+/- 0.08)	1.3 (+/- 0.10)	1.58 (+/- 0.12)	1.63 (+/- 0.12)	1.9 (+/- 0.14)	1.99 (+/- 0.14)	2.16 (+/- 0.16)	2.25 (+/- 0.16)
B	0.900 MIN. - 0.945 MAX.	1.051 MIN. - 1.096 MAX.	1.230 MIN. - 1.275 MAX.	1.458 MIN. - 1.503 MAX.	1.735 MIN. - 1.78 MAX.	2.084 MIN. - 2.129 MAX.	2.324 MIN. - 2.387 MAX.	2.863 MIN. - 2.908 MAX.
C	.545 (+/- .030)	.680 (+/- .030)	.845 (+/- .030)	1.055 (+/- .030)	1.320 (+/- .030)	1.665 (+/- .030)	1.905 (+/- .030)	2.380 (+/- .046)
D	25/94	5/16	3/8	13/32	7/16	1/2	5/8	23/35
E	1/4 X 18	3/8 X 18	1/2 X 14	3/4 X 14	1 X 11.5	1-1/4 X 11.5	1-1/2 X 11.5	2 X 11.5

NOTES: Fittings may be ordered with reduced ends and/or female threads

