



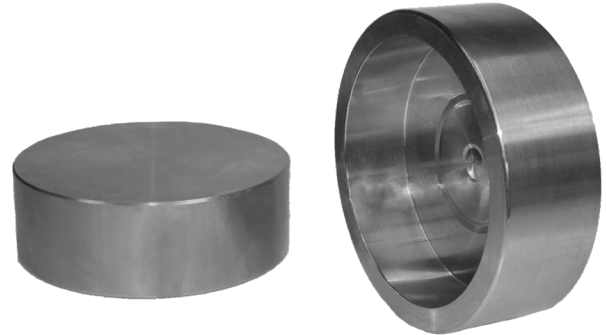
Republic Brass Sales, Inc.  
 619.229.8304  
 6566 Federal Blvd  
 Lemon Grove, CA 91945  
 www.republicbrasssales.com

# CAP SOCKET WELD

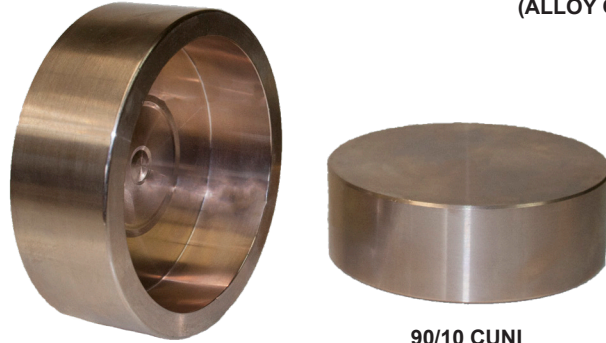
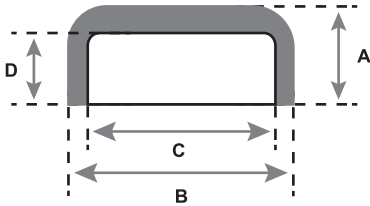
Specification: NAVSEA DWG 803-6397430  
 Pressure Rating: 400 PSIG (WOG)

Intended for use with Class 200 or 700  
 Copper Nickel Tube IAW MIL-T-16420

SERVICE RATING TABLE				
Nominal Pipe Size (INCHES)	Maximum Working Pressure (LB/IN <sup>2</sup> )	Maximum Temperature (°F)	Maximum Working Pressure (LB/IN <sup>2</sup> )	Maximum Temperature (°F)
1/4 through 6	200	425	400	150
Above 6	150	425	250	150



70/30 CUNI  
 (ALLOY C715/C964)



90/10 CUNI  
 (ALLOY C706/C962)

## AVAILABLE ALLOYS: CUNI 90/10 & CUNI 70/30

NOMINAL PIPE SIZE	1/4"	3/8"	1/2"	3/4"	1"	1 1/4"	1 1/2"	2"	2 1/2"	3"	3 1/2"	4"
RBS P/N (90/10)	CA9SW040	CA9SW060	CA9SW100	CA9SW150	CA9SW200	CA9SW250	CA9SW300	CA9SW400	CA9SW450	CA9SW500	CA9SW550	CA9SW600
RBS P/N (70/30)	CA7SW040	CA7SW060	CA7SW100	CA7SW150	CA7SW200	CA7SW250	CA7SW300	CA9SW400	CA7SW450	CA7SW500	CA7SW550	CA7SW600
A	0.380	0.420	0.500	0.540	0.590	0.670	0.820	0.880	1.030	1.120	1.200	1.270
B	0.945	1.096	1.275	1.503	1.780	2.129	2.387	2.908	3.408	4.041	4.541	5.097
C	.545 (+/- .030)	.680 (+/- .030)	.845 (+/- .030)	1.055 (+/- .030)	1.320 (+/- .030)	1.665 (+/- .030)	1.905 (+/- .030)	2.380 (+/- .046)	2.880 (+/- .051)	3.505 (+/- .055)	4.005 (+/- .055)	4.505 (+/- .060)
D	25/94	5/16	3/8	13/32	7/16	1/2	5/8	23/35	25/32	77/93	7/8	29/32

NOTES: Fittings may be ordered with reduced ends and/or female threads.

