



Republic Brass Sales, Inc.
 619.229.8304
 6566 Federal Blvd
 Lemon Grove, CA 91945
 www.republicbrasssales.com

PLUG SOCKET WELD

Specification: NAVSEA DWG 803-6397430
 Pressure Rating: 400 PSIG (WOG)

Intended for use with Class 200 or 700
 Copper Nickel Tube IAW MIL-T-16420

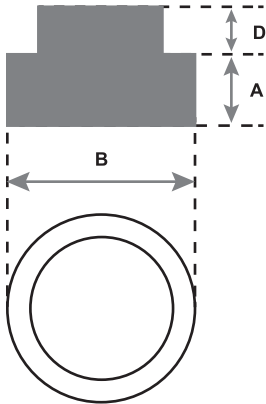
SERVICE RATING TABLE				
Nominal Pipe Size (INCHES)	Maximum Working Pressure (LB/IN ²)	Maximum Temperature (°F)	Maximum Working Pressure (LB/IN ²)	Maximum Temperature (°F)
1/4 through 6	200	425	400	150
Above 6	150	425	250	150



70/30 CUNI
 (ALLOY C715/C964)



90/10 CUNI
 (ALLOY C706/C962)



AVAILABLE ALLOYS: CUNI 90/10 & CUNI 70/30

NOMINAL PIPE SIZE	1/4"	3/8"	1/2"	3/4"	1"	1 1/4"	1 1/2"	2"	2 1/2"	3"	3 1/2"	4"
RBS P/N (90/10)	PL9SW040	PL9SW060	PL9SW100	PL9SW150	PL9SW200	PL9SW250	PL9SW300	PL9SW350	PL9SW400	PL9SW450	PL9SW500	PL9SW600
RBS P/N (70/30)	PL7SW040	PL9SW060	PL7SW100	PL7SW150	PL7SW200	PL7SW250	PL7SW300	PL7SW350	PL7SW400	PL7SW450	PL7SW500	PL7SW600
A	0.300 MIN - 0.410 MAX	0.340 MIN - 0.410 MAX	0.410 MIN - 0.540 MAX	0.440 MIN - 0.550 MAX	0.470 MIN - 0.690 MAX	0.530 MIN - 0.710 MAX	0.660 MIN - 0.730 MAX	0.690 MIN - 0.760 MAX	0.840 MIN - 1.070 MAX	0.890 MIN - 1.130 MAX	0.940 MIN - 1.100 MAX	0.970 MIN - 1.220 MAX
B	0.535 MIN - 0.540 MAX	0.670 MIN - 0.675 MAX	0.834 MIN - 0.840 MAX	1.044 MIN - 1.050 MAX	1.307 MIN - 1.315 MAX	1.652 MIN - 1.660 MAX	1.892 MIN - 1.900 MAX	2.365 MIN - 2.375 MAX	2.865 MIN - 8.75 MAX	3.488 MIN - 3.500 MAX	3.988 MIN - 4.000 MAX	4.485 MIN - 4.500 MAX
D	0.28 MIN	0.31 MIN	0.38 MIN	0.44 MIN	0.50 MIN	0.56 MIN	0.62 MIN	0.68 MIN	0.74 MIN	0.80 MIN	0.86 MIN	0.92 MIN

NOTES: Fittings may be ordered with reduced ends and/or female threads

