



Republic Brass Sales, Inc.
 619.229.8304
 6566 Federal Blvd
 Lemon Grove, CA 91945
 www.republicbrasssales.com

RETURN BEND SOCKET WELD

Specification: NAVSEA DWG 803-6397430
 Pressure Rating: 400 PSIG (WOG)

Intended for use with Class 200 or 700
 Copper Nickel Tube IAW MIL-T-16420

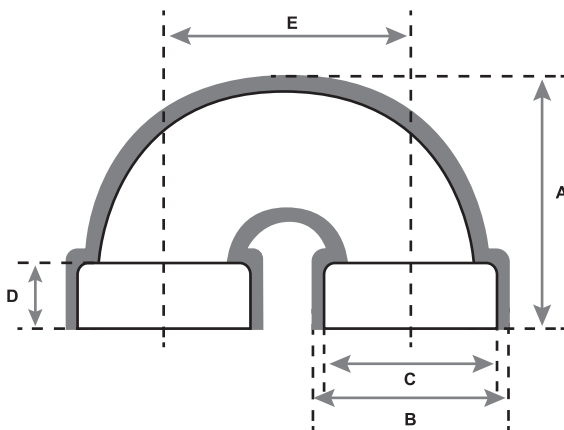
SERVICE RATING TABLE				
Nominal Pipe Size (INCHES)	Maximum Working Pressure (LB/IN ²)	Maximum Temperature (°F)	Maximum Working Pressure (LB/IN ²)	Maximum Temperature (°F)
1/4 through 6	200	425	400	150
Above 6	150	425	250	150



70/30 CUNI
 (ALLOY C715/C964)



90/10 CUNI
 (ALLOY C706/C962)



AVAILABLE ALLOYS: CUNI 90/10 & CUNI 70/30

NOMINAL PIPE SIZE	1/2"	3/4"	1"	1 1/4"	1 1/2"	2"
RBS P/N (90/10)	RB9SW100	RB9SW150	RB9SW200	RB9SW250	RB9SW300	RB9SW400
RBS P/N (70/30)	RB7SW100	RB7SW150	RB7SW200	RB7SW250	RB7SW300	RB7SW400
A	1.690	2.130	2.630	3.130	3.560	4.190
B	1.275	1.503	1.780	2.129	2.387	2.908
C	.845 (+/- .030)	1.055 (+/- .030)	1.320 (+/- .030)	1.665 (+/- .030)	1.905 (+/- .030)	2.380 (+/- .046)
D	3/8	13/32	7/16	1/2	5/8	23/35
E	1.500	2.000	2.500	3.000	3.500	4.000

NOTES: Fittings may be ordered with reduced ends and/or female threads.

