



Republic Brass Sales, Inc.
619.229.8304
6566 Federal Blvd
Lemon Grove, CA 91945
www.republicbrasssales.com

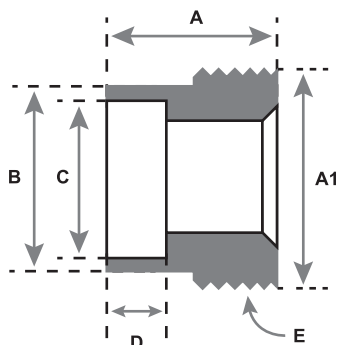
UNION THREADPIECE SOCKET WELD

Specification: NAVSEA DWG 803-6397430

Pressure Rating: 400 PSIG (WOG)

Intended for use with Class 200 or 700
Copper Nickel Tube IAW MIL-T-16420

SERVICE RATING TABLE				
Nominal Pipe Size (INCHES)	Maximum Working Pressure (LB/IN ²)	Maximum Temperature (°F)	Maximum Working Pressure (LB/IN ²)	Maximum Temperature (°F)
1/4 through 6	200	425	400	150
Above 6	150	425	250	150



70/30 CUNI
(ALLOY C715/C964)



90/10 CUNI
(ALLOY C706/C962)



AVAILABLE ALLOYS: CUNI 90/10 & CUNI 70/30

NOMINAL PIPE SIZE	1/4"	3/8"	1/2"	3/4"	1"	1 1/4"	1 1/2"	2"
RBS P/N (90/10)	TH9SW040	TH9SW060	TH9SW100	TH9SW150	TH9SW200	TH9SW250	TH9SW300	TH9SW400
RBS P/N (70/30)	TH7SW040	TH7SW060	TH7SW100	TH7SW150	TH7SW200	TH7SW250	TH7SW300	TH7SW400
A	.85 (+/- .02)	.94 (+/- .391)	.99 (+/- .391)	1.18 (+/- .500)	1.25 (+/- .500)	1.43 (+/- .500)	1.58 (+/- .547)	1.67 (+/- .547)
A1	1.0846 MIN. - 1.0940 MAX.	1.2697 MIN. - 1.2800 MAX.	1.4764 MIN. - 1.4867 MAX.	1.8172 MIN. - 1.8293 MAX.	2.1471 MIN. - 2.1592 MAX.	2.5821 MIN. - 2.5950 MAX.	2.9021 MIN. - 2.9150 MAX.	3.5020 MIN. - 3.5149 MAX.
B	.828 (+/- .010)	.984 (+/- .010)	1.188 (+/- .010)	1.468 (+/- .010)	1.750 (+/- .010)	2.125 (+/- .010)	2.375 (+/- .010)	2.906 (+/- .010)
C	.545 (+.030 / -.000)	.680 (+.030 / -.000)	.845 (+.030 / -.000)	1.055 (+.030 / -.000)	1.320 (+.030 / -.000)	1.665 (+.030 / -.000)	1.905 (+.030 / -.000)	2.380 (+.046 / -.000)
D	17/64 (MIN)	5/16 (MIN)	3/8 (MIN)	13/32 (MIN)	7/16 (MIN)	1/2 (MIN)	5/8 (MIN)	21/32 (MIN)
E	16-UNS	14-UNS	14-UNS	11-UNS	11-UNS	10-UNS	10-UNS	10-UNS

NOTES: Fittings may be ordered with reduced ends and/or female threads

