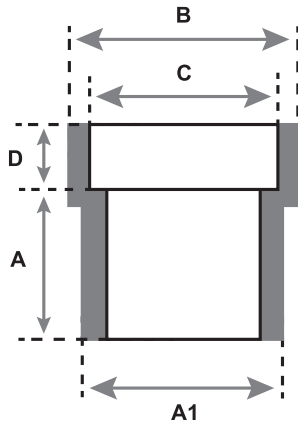




Republic Brass Sales, Inc.
 619.229.8304
 6566 Federal Blvd
 Lemon Grove, CA 91945
 www.republicbrasssales.com

BUSHING (INSERT REDUCER) SOCKET WELD

Specification: ASME B16.11
 Pressure Rating: 3000 / 6000 PSIG (WOG)



AVAILABLE ALLOYS: (FERROUS) CARBON STEEL (A105) & STAINLESS STEEL (GRADES 304 / 316 / 321 / 347)
 (NON-FERROUS) CUNI (90/10 & 70/30), NICU (MONEL), ALUMINUM (5086)

**Additional materials available upon request.*

NOMINAL PIPE SIZE	CLASS 3000						CLASS 6000					
	RBS P/N	A	A1	B	C	D	RBS P/N	A	A1	B	C	D
3/8 x 1/4	BXSW3-060-040	0.750	0.675	0.938	0.555	0.438 (MIN.)	BXSW6-060-040	0.875	0.675	1.000	0.555	0.438 (MIN.)
1/2 x 1/4	BXSW3-100-040	0.813	0.850	0.938	0.555	0.438 (MIN.)	BXSW6-100-040	0.875	0.850	1.000	0.555	0.438 (MIN.)
1/2 x 3/8	BXSW3-100-060	0.813	0.850	1.063	0.690	0.438 (MIN.)	BXSW6-100-060	0.938	0.850	1.188	0.690	0.438 (MIN.)
3/4 x 3/8	-----	-----	-----	-----	-----	-----	BXSW6-150-060	0.875	1.060	1.188	0.690	0.438 (MIN.)
3/4 x 1/2	BXSW3-150-100	0.875	1.060	1.313	0.855	0.438 (MIN.)	BXSW6-150-100	1.063	1.060	1.375	0.855	0.438 (MIN.)
1 x 1/2	-----	-----	-----	-----	-----	-----	BXSW6-200-100	1.125	1.325	1.375	0.855	0.438 (MIN.)
1 x 3/4	BXSW3-200-150	0.938	1.325	1.500	1.065	0.563 (MIN.)	BXSW6-200-150	1.125	1.325	1.688	1.065	0.563 (MIN.)
1 1/4 x 1	BXSW3-250-200	1.000	1.670	1.875	1.330	0.500 (MIN.)	BXSW6-250-200	1.188	1.670	2.000	1.330	0.500 (MIN.)
1 1/2 x 1	-----	-----	-----	-----	-----	-----	BXSW6-300-200	1.156	1.910	2.063	1.330	0.500 (MIN.)
1 1/2 x 1 1/4	BXSW3-300-250	1.125	1.910	2.250	1.675	0.500 (MIN.)	BXSW6-300-250	1.375	1.910	2.375	1.675	0.500 (MIN.)
2 x 1 1/2	BXSW3-400-300	1.250	2.385	2.500	1.915	0.500 (MIN.)	BXSW6-400-300	1.531	2.385	2.688	1.915	0.500 (MIN.)

NOTES: Fittings may be ordered with reduced ends.

For P/N's replace X with the following codes:

Carbon Steel - **CS**

Stainless Steel 304 - **304**

Stainless Steel 316 - **316**

Stainless Steel 321 - **321**

Stainless Steel 347 - **347**

Cuni 90/10 - **9**

Cuni 70/30 - **7**

Nicu (Monel) - **M**

Aluminum Gr. 5086 - **A**

