



Republic Brass Sales, Inc.  
619.229.8304  
6566 Federal Blvd  
Lemon Grove, CA 91945  
www.republicbrasssales.com

# STRAIGHT LINE BALL VALVE

## SIZES 1/4" to 2-1/2"

Specification: NAVSEA DWG 803-5001003

Pressure Rating: 700 PSI

VALVE ASSEMBLY NUMBER (DWG No.)  
803-5001003 - C 3 1 1

MATERIAL (SEE A)  
SIZE (SEE B)  
END PREP (SEE C)  
TYPE (SEE D)

**(A) MATERIAL**

- A = Bronze End Piece (Titanium Ball) with Bronze Body
- B = Bronze End Piece (Cres Ball) with Bronze Body
- C = Carbon Steel End Piece (Cres Ball) with Carbon Steel Body
- D = Nickel Copper End Piece (Titanium Ball) with Bronze Body
- E = Nickel Copper End Piece (Cres Ball) with Bronze Body
- F = Copper Nickel End Piece (Titanium Ball) with Bronze Body
- G = Copper Nickel End Piece (Cres Ball) with Bronze Body
- M = Copper Nickel End Piece (Titanium Ball) with Copper Nickel Body
- N = Copper Nickel End Piece (Cres Ball) with Copper Nickel Body
- S = Stainless Steel End Piece (Cres Ball) with Stainless Steel Body

**(B) SIZE:**

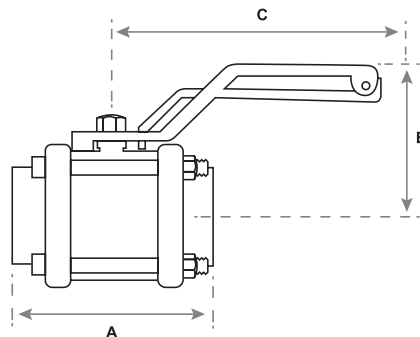
- 1 = 1/4"      6 = 1 1/4"
- 2 = 3/8"      7 = 1 1/2"
- 3 = 1/2"      8 = 2"
- 4 = 3/4"      9 = 2 1/2"
- 5 = 1"

**(C) END PREPARATION:**

- 1 = Socket Weld, Class 700 or SCH 40
- 2 = Butt Weld, Class 700 or SCH 40
- 3 = Silver Braze
- 4 = Flange, Drilled
- 5 = Silver Braze x Hose Connector
- 6 = Socket Weld x Hose Connector
- 7 = Socket Weld, SCH 80
- 8 = Butt Weld, SCH 80
- 9 = Socket Weld (Class 1650)
- A = Butt Weld (Class 1650)
- B = Socket Weld (Class 3300)
- C = Butt Weld (Class 3300)
- D = Socket Weld (Class 6000)
- E = Butt Weld (Class 6000)
- F = Flange, Undrilled

**(D) TYPE:**

- 1 = Straight (2 Way)
- 2 = 3 Way



NOMINAL PIPE SIZE	RBS P/N	A Sil-Braze	A Butt Weld or Socket Weld	A Sil-Braze X Hose	A Socket Weld X Hose	A Flanged	B	B Flanged	C
1/4"	1003-ABCD	3.755	3.755			7.848	2.144	3.102	4.287
3/8"	1003-ABCD	3.885	3.885			7.978	2.484	3.484	4.332
1/2"	1003-ABCD	4.191	4.191	4.441	4.441	8.472	2.907	3.555	5.832
3/4"	1003-ABCD	4.520	4.770			8.583	3.058	3.795	5.836
1"	1003-ABCD	5.048	5.172	5.361	5.423	9.423	3.402	4.120	7.082
1 1/4"	1003-ABCD	5.422	5.298			9.643	3.402	4.120	7.082
1 1/2"	1003-ABCD	5.972	5.598	5.973	5.786	10.068	3.715	4.704	7.026
2"	1003-ABCD	6.582	6.458			11.739	5.015	5.015	8.526
2 1/2"	1003-ABCD	7.349	6.725	8.100	7.788	12.944	5.389	5.389	10.026

NOTES: For P/N replace **ABCD** with the correct Assembly Number codes.

CRES Balls shall not be used in seawater applications. If end piece material is Copper Nickel, the end preparations shall be designed for Class 700 piping. If end piece is Carbon Steel, Stainless Steel or Nickel Copper, the end preparations shall be designed to go with Schedule 40 piping.

Valves available with automated operators upon request.

