



Republic Brass Sales, Inc.
 619.229.8304
 6566 Federal Blvd
 Lemon Grove, CA 91945
 www.republicbrasssales.com

STRAIGHT LINE BALL VALVE

SIZES 3" & 3-1/2"

Specification: NAVSEA DWG 803-5001004

Pressure Rating: 400 PSI

VALVE ASSEMBLY NUMBER (DWG No.) 803-5001004 - A 3 1 1

MATERIAL (SEE A)
 SIZE (SEE B)
 END PREP (SEE C)
 TYPE (SEE D)

(A) MATERIAL

- A = Bronze End Piece (Titanium Ball) with Bronze Body
- B = Bronze End Piece (Cres Ball) with Bronze Body
- D = Nickel Copper End Piece (Titanium Ball) with Bronze Body
- E = Nickel Copper End Piece (Cres Ball) with Bronze Body
- M = Copper Nickel End Piece (Titanium Ball) with Bronze Body
- N = Copper Nickel End Piece (Cres Ball) with Bronze Body

(B) SIZE:

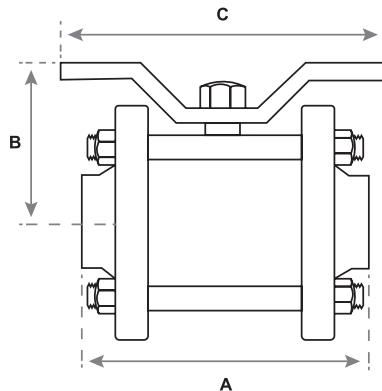
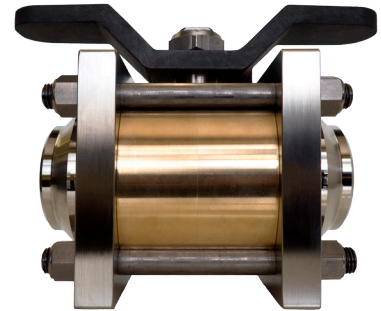
- 1 = 3"
- 2 = 3 1/2"
- 3 = 4"
- 4 = 5"
- 5 = 6"

(C) END PREPARATION:

- 1 = Butt Weld (SCH 40 for Nickel Copper or Class 700 for Copper Nickel End Pieces)
- 2 = Silver Braze

(D) TYPE:

- 1 = Straight



NOMINAL PIPE SIZE	RBS P/N	A Sil-Braze / Butt Weld	B	C
3"	1004-ABCD	9.250	5.508	12
3 1/2"	1004-ABCD	9.250	5.508	12

NOTES: For P/N replace **ABCD** with the correct Assembly Number codes.

End Preparation:

1. Butt Weld (SCH 40 or Class 700) in accordance to P-73 or MIL-STD-22
2. Silver Braze in accordance with NAVSHIPS 803-1385942

CRES Balls shall not be used in seawater applications.

Valves available with automated operators upon request.

