

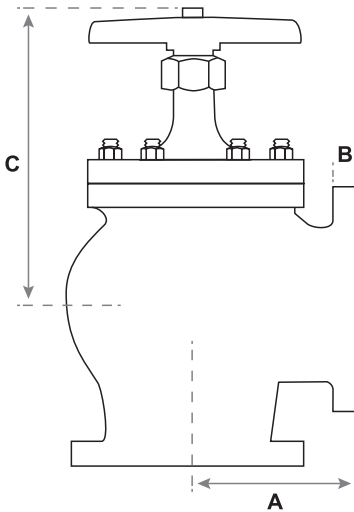


Republic Brass Sales, Inc.  
 619.229.8304  
 6566 Federal Blvd  
 Lemon Grove, CA 91945  
 www.republicbrasssales.com

# ANGLE GLOBE VALVE 150# NAVY FLANGED BRONZE BODY / MONEL TRIM

Specification: NAVSEA DWG 803-1385541  
 Pressure Rating: 100 PSI WOG

SERVICE RATING TABLE			
TEMP (°F)			MAXIMUM PRESSURE (PSIG)
WATER & STEAM	OIL	GAS	
30-338	30-250	30-400	100



NOMINAL PIPE SIZE	2 1/2"	3"	4"	5"	6"	8"	10"	12"
RBS P/N	541A-450	541A-500	541A-600	541A-700	541A-800	541A-900	541A-1000	541A-1100
A (+/- 1/16)	4 1/2	5	6	7 1/8	8	9 3/4	11 3/4	13 3/8
B (+/- 1/8)	1/2	1/2	1/2	9/16	9/16	5/8	11/16	3/4
C	8 3/8	9 1/8	11 5/16	13 3/4	15 1/4	18 13/16	21 3/8	23 3/4
Flange OD	6 1/8	6 5/8	7 11/16	9 1/16	10 1/8	12 3/8	15	17 5/8
No of holes	6	8	8	10	12	14	15	18
Bolt Circle	5	5 1/2	6 9/16	7 13/16	8 7/8	11 1/16	13 7/16	16 1/16

NOTES: Valves are intended for the use of water, oil or gas service.

