



Republic Brass Sales, Inc.
619.229.8304
6566 Federal Blvd
Lemon Grove, CA 91945
www.republicbrasssales.com

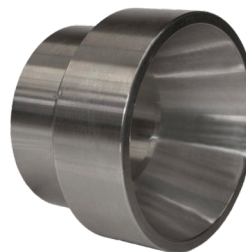
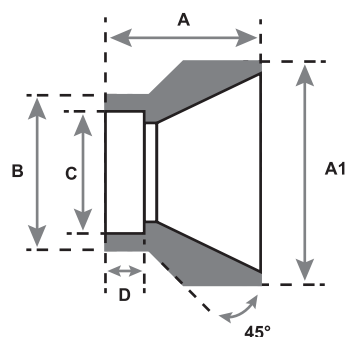
BUSHING (INSERT REDUCER) SOCKET WELD

Specification: NAVSEA DWG 803-6397430

Pressure Rating: 400 PSIG (WOG)

Intended for use with Class 200 or 700
Copper Nickel Tube IAW MIL-T-16420

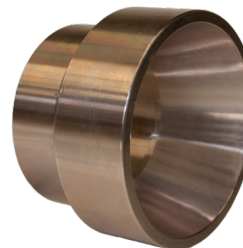
SERVICE RATING TABLE				
Nominal Pipe Size (INCHES)	Maximum Working Pressure (LB/IN ²)	Maximum Temperature (°F)	Maximum Working Pressure (LB/IN ²)	Maximum Temperature (°F)
1/4 through 6	200	425	400	150
Above 6	150	425	250	150



70/30 CUNI
(ALLOY C715/C964)



90/10 CUNI
(ALLOY C706/C962)



AVAILABLE ALLOYS: CUNI 90/10 & CUNI 70/30

NOMINAL PIPE SIZE	RBS P/N (90/10)	RBS P/N (70/30)	A	A1	B	C	D
3/8 x 1/4	B9SW060-040	B7SW060-040	0.94	.675 (+/- .005)	1.096	.680 (+/- .030)	5/16
1/2 x 1/4	B9SW100-040	B7SW100-040	1.06	.840 (+/- .006)	1.275	.845 (+/- .030)	3/8
1/2 x 3/8	B9SW100-060	B7SW100-060	1.06	.840 (+/- .006)	1.275	.845 (+/- .030)	3/8
3/4 x 1/4	B9SW150-040	B7SW150-040	1.06	1.050 (+/- .006)	1.503	1.055 (+/- .030)	13/32
3/4 x 3/8	B9SW150-060	B7SW150-060	1.19	1.050 (+/- .006)	1.503	1.055 (+/- .030)	13/32
3/4 x 1/2	B9SW150-100	B7SW150-100	1.19	1.050 (+/- .006)	1.503	1.055 (+/- .030)	13/32
1 x 1/4	B9SW200-040	B7SW200-040	1.23	1.315 (+/- .008)	1.78	1.320 (+/- .030)	7/16
1 x 3/8	B9SW200-060	B7SW200-060	1.18	1.315 (+/- .008)	1.78	1.320 (+/- .030)	7/16
1 x 1/2	B9SW200-100	B7SW200-100	1.16	1.315 (+/- .008)	1.78	1.320 (+/- .030)	7/16
1 x 3/4	B9SW200-150	B7SW200-150	1.25	1.315 (+/- .008)	1.78	1.320 (+/- .030)	7/16
1 1/4 x 1/4	B9SW250-040	B7SW250-040	1.46	1.660 (+/- .008)	2.129	1.665 (+/- .030)	1/2
1 1/4 x 3/8	B9SW250-060	B7SW250-060	1.41	1.660 (+/- .008)	2.129	1.665 (+/- .030)	1/2
1 1/4 x 1/2	B9SW250-100	B7SW250-100	1.4	1.660 (+/- .008)	2.129	1.665 (+/- .030)	1/2
1 1/4 x 3/4	B9SW250-150	B7SW250-150	1.33	1.660 (+/- .008)	2.129	1.665 (+/- .030)	1/2
1 1/4 x 1	B9SW250-200	B7SW250-200	1.44	1.660 (+/- .008)	2.129	1.665 (+/- .030)	1/2
1 1/2 x 1/4	B9SW300-040	B7SW300-040	1.71	1.900 (+/- .008)	2.387	1.905 (+/- .030)	5/8

NOTES: Fittings may be ordered with reduced ends and/or female threads



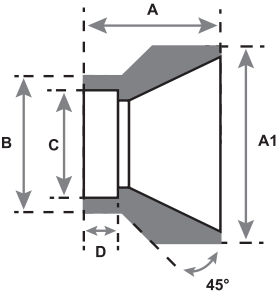


Republic Brass Sales, Inc.
 619.229.8304
 6566 Federal Blvd
 Lemon Grove, CA 91945
 www.republicbrasssales.com

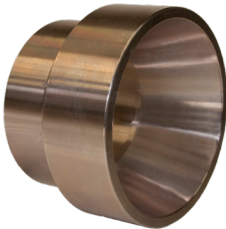
BUSHING (INSERT REDUCER)

Specification: NAVSEA DWG 803-6397430
 Pressure Rating: 400 PSIG (WOG)

SOCKET WELD



**70/30 CUNI
 (ALLOY C715/C964)**



**90/10 CUNI
 (ALLOY C706/C962)**

NOMINAL PIPE SIZE	RBS P/N (90/10)	RBS P/N (70/30)	A	A1	B	C	D
1 1/2 x 3/8	B9SW300-060	B7SW300-060	1.66	1.900 (+/- .008)	2.387	1.905 (+/- .030)	5/8
1 1/2 x 1/2	B9SW300-100	B7SW300-100	1.64	1.900 (+/- .008)	2.387	1.905 (+/- .030)	5/8
1 1/2 x 3/4	B9SW300-150	B7SW300-150	1.58	1.900 (+/- .008)	2.387	1.905 (+/- .030)	5/8
1 1/2 x 1	B9SW300-200	B7SW300-200	1.47	1.900 (+/- .008)	2.387	1.905 (+/- .030)	5/8
1 1/2 x 1 1/4	B9SW300-250	B7SW300-250	1.63	1.900 (+/- .008)	2.387	1.905 (+/- .030)	5/8
2 x 1/4	B9SW400-040	B7SW400-040	1.97	2.375 (+/- .010)	2.908	2.380 (+/- .046)	23/35
2 x 3/8	B9SW400-060	B7SW400-060	1.93	2.375 (+/- .010)	2.908	2.380 (+/- .046)	23/35
2 x 1/2	B9SW400-200	B7SW400-200	1.91	2.375 (+/- .010)	2.908	2.380 (+/- .046)	23/35
2 x 3/4	B9SW400-150	B7SW400-150	1.85	2.375 (+/- .010)	2.908	2.380 (+/- .046)	23/35
2 x 1	B9SW400-200	B7SW400-200	1.74	2.375 (+/- .010)	2.908	2.380 (+/- .046)	23/35
2 x 1 1/4	B9SW400-250	B7SW400-250	1.63	2.375 (+/- .010)	2.908	2.380 (+/- .046)	23/35
2 x 1 1/2	B9SW400-300	B7SW400-300	1.64	2.375 (+/- .010)	2.908	2.380 (+/- .046)	23/35
2 1/2 x 1/2	B9SW450-100	B7SW450-100	2.29	2.875 (+/- .010)	3.408	2.880 (+/- .051)	25/32
2 1/2 x 3/4	B9SW450-150	B7SW450-150	2.22	2.875 (+/- .010)	3.408	2.880 (+/- .051)	25/32
2 1/2 x 1	B9SW450-200	B7SW450-200	2.12	2.875 (+/- .010)	3.408	2.880 (+/- .051)	25/32
2 1/2 x 1 1/4	B9SW450-250	B7SW450-250	2	2.875 (+/- .010)	3.408	2.880 (+/- .051)	25/32
2 1/2 x 1 1/2	B9SW450-300	B7SW450-300	2.01	2.875 (+/- .010)	3.408	2.880 (+/- .051)	25/32
2 1/2 x 2	B9SW450-400	B7SW450-400	1.77	2.875 (+/- .010)	3.408	2.880 (+/- .051)	25/32
3 x 1/2	B9SW500-100	B7SW500-100	2.65	3.500 (+/- .012)	4.041	3.505 (+/- .055)	77/93
3 x 3/4	B9SW500-150	B7SW500-150	2.58	3.500 (+/- .012)	4.041	3.505 (+/- .055)	77/93
3 x 1	B9SW500-200	B7SW500-200	2.48	3.500 (+/- .012)	4.041	3.505 (+/- .055)	77/93
3 x 1 1/4	B9SW500-250	B7SW500-250	2.36	3.500 (+/- .012)	4.041	3.505 (+/- .055)	77/93
3 x 1 1/2	B9SW500-300	B7SW500-300	2.37	3.500 (+/- .012)	4.041	3.505 (+/- .055)	77/93
3 x 2	B9SW500-400	B7SW500-400	2.13	3.500 (+/- .012)	4.041	3.505 (+/- .055)	77/93
3 x 2 1/2	B9SW500-450	B7SW500-450	2.01	3.500 (+/- .012)	4.041	3.505 (+/- .055)	77/93
3 1/2 x 1	B9SW550-200	B7SW550-200	2.77	4.000 (+/- .012)	4.541	4.005 (+/- .055)	7/8
3 1/2 x 1 1/4	B9SW550-250	B7SW550-250	2.66	4.000 (+/- .012)	4.541	4.005 (+/- .055)	7/8
3 1/2 x 1 1/2	B9SW550-300	B7SW550-300	2.67	4.000 (+/- .012)	4.541	4.005 (+/- .055)	7/8
3 1/2 x 2	B9SW550-400	B7SW550-400	2.43	4.000 (+/- .012)	4.541	4.005 (+/- .055)	7/8
3 1/2 x 2 1/2	B9SW550-450	B7SW550-450	2.3	4.000 (+/- .012)	4.541	4.005 (+/- .055)	7/8
3 1/2 x 3	B9SW550-500	B7SW550-500	2.19	4.000 (+/- .012)	4.541	4.005 (+/- .055)	7/8
4 x 3/4	B9SW600-150	B7SW600-150	3.16	4.500 (+/- .015)	5.097	4.505 (+/- .060)	29/32
4 x 1	B9SW600-200	B7SW600-200	3.06	4.500 (+/- .015)	5.097	4.505 (+/- .060)	29/32
4 x 1 1/4	B9SW600-250	B7SW600-250	2.94	4.500 (+/- .015)	5.097	4.505 (+/- .060)	29/32
4 x 1 1/2	B9SW600-300	B7SW600-300	2.95	4.500 (+/- .015)	5.097	4.505 (+/- .060)	29/32
4 x 2	B9SW600-400	B7SW600-400	2.71	4.500 (+/- .015)	5.097	4.505 (+/- .060)	29/32
4 x 2 1/2	B9SW600-450	B7SW600-450	2.58	4.500 (+/- .015)	5.097	4.505 (+/- .060)	29/32
4 x 3	B9SW600-500	B7SW600-500	2.3	4.500 (+/- .015)	5.097	4.505 (+/- .060)	29/32
4 x 3 1/2	B9SW600-550	B7SW600-550	2.25	4.500 (+/- .015)	5.097	4.505 (+/- .060)	29/32

NOTES: Fittings may be ordered with reduced ends and/or female threads

