



Republic Brass Sales, Inc.
619.229.8304
6566 Federal Blvd
Lemon Grove, CA 91945
www.republicbrasssales.com

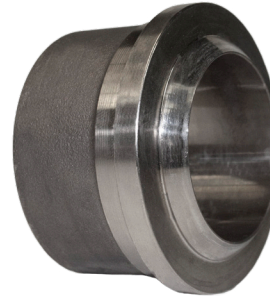
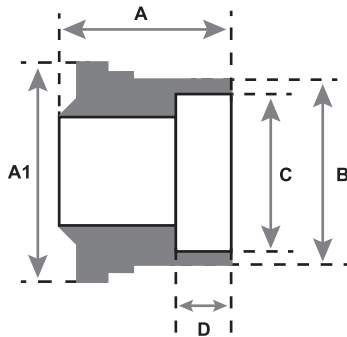
UNION TAILPIECE SOCKET WELD

Specification: NAVSEA DWG 803-6397430

Pressure Rating: 400 PSIG (WOG)

Intended for use with Class 200 or 700
Copper Nickel Tube IAW MIL-T-16420

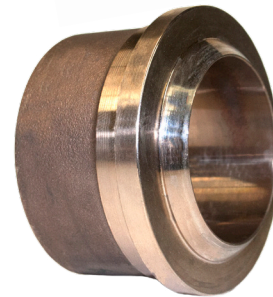
SERVICE RATING TABLE				
Nominal Pipe Size (INCHES)	Maximum Working Pressure (LB/IN ²)	Maximum Temperature (°F)	Maximum Working Pressure (LB/IN ²)	Maximum Temperature (°F)
1/4 through 6	200	425	400	150
Above 6	150	425	250	150



70/30 CUNI
(ALLOY C715/C964)



90/10 CUNI
(ALLOY C706/C962)



AVAILABLE ALLOYS: CUNI 90/10 & CUNI 70/30

NOMINAL PIPE SIZE	1/4"	3/8"	1/2"	3/4"	1"	1 1/4"	1 1/2"	2"
RBS P/N (90/10)	TP9SW040	TP9SW060	TP9SW100	TP9SW150	TP9SW200	TP9SW250	TP9SW300	TP9SW400
RBS P/N (70/30)	TP7SW040	TP7SW060	TP7SW100	TP7SW150	TP7SW200	TP7SW250	TP7SW300	TP7SW400
A	0.87 (+/- .02)	0.96 (+/- .02)	1.05 (+/- .02)	1.15 (+/- .02)	1.3 (+/- .02)	1.47 (+/- .02)	1.62 (+/- .02)	1.85 (+/- .02)
A1	0.61 (+/- .005)	0.755 (+/- .005)	0.96 (+/- .005)	1.14 (+/- .005)	1.445 (+/- .005)	1.77 (+/- .005)	2.06 (+/- .005)	2.545 (+/- .005)
B	.828 (+/- .015)	.984 (+/- .015)	1.188 (+/- .015)	1.468 (+/- .015)	1.750 (+/- .015)	2.125 (+/- .015)	2.375 (+/- .015)	2.906 (+/- .015)
C	.545 (-.000 / +.030)	.680 (-.000 / +.030)	.845 (-.000 / +.030)	1.055 (-.000 / +.030)	1.320 (-.000 / +.030)	1.665 (-.000 / +.030)	1.905 (-.000 / +.030)	2.380 (-.000 / +.046)
D	17/64	5/16	3/8	13/32	7/16	1/2	5/8	21/32

NOTES: Fittings may be ordered with reduced ends and/or female threads

