

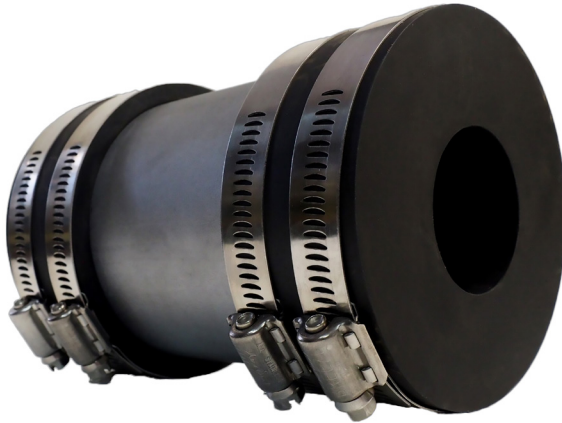


Republic Brass Sales, Inc.
 619.229.8304
 6566 Federal Blvd
 Lemon Grove, CA 91945
 www.republicbrasssales.com

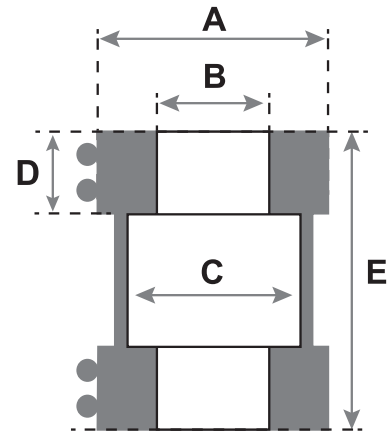
INSULATED BULKHEAD SLEEVE RUBBER

Specification: DWG 505-2424424

Intended for use with Class 200 or 700
 Copper Nickel Tube IAW MIL-T-16420



SYSTEM PIPE SIZE	RBS P/N	A	B (+0.020/-0.000)	C	D	E
1/8"	BULK424-020-XY	2.400	0.405	1.610	1 5/8	5 3/4
1/4"	BULK424-040-XY	2.875	0.540	2.067	1 5/8	5 3/4
3/8"	BULK424-060-XY	2.875	0.675	2.067	1 5/8	5 3/4
1/2"	BULK424-100-XY	3.375	0.840	2.469	1 5/8	5 3/4
3/4"	BULK424-150-XY	3.375	1.050	2.469	1 5/8	5 3/4
1"	BULK424-200-XY	3.375	1.315	2.469	1 5/8	5 3/4
1 1/4"	BULK424-250-XY	4.000	1.660	3.058	1 5/8	5 3/4
1 1/2"	BULK424-300-XY	4.000	1.900	3.068	1 5/8	5 3/4
2"	BULK424-400-XY	4.500	2.375	3.548	1 5/8	5 3/4
2 1/2"	BULK424-450-XY	5.000	2.875	4.026	1 5/8	5 3/4
3"	BULK424-500-XY	6.063	3.500	5.047	1 5/8	5 3/4
3 1/2"	BULK424-550-XY	6.063	4.000	5.047	1 5/8	5 3/4
4"	BULK424-600-XY	7.125	4.500	6.065	1 5/8	5 3/4
5"	BULK424-700-XY	7.500	5.563	6.500	1 5/8	5 3/4
6"	BULK424-800-XY	9.125	6.625	7.981	1 5/8	5 3/4
8"	BULK424-900-XY	11.125	8.625	10.020	1 5/8	5 3/4
10"	BULK424-1000-XY	13.425	10.750	12.000	1 5/8	5 3/4



Rubber caps to be Neoprene for chilled water service and Viton for steam service below 338° F.

NOTES: For P/N's:
 Replace X with the following codes for Type: Replace Y with the following codes for Style:
 Type 1 Steel - S Neoprene - N
 Type 2 Aluminum- AL Viton - V

